



RT-7600 *for Vet*

Auto Hematology Analyzer



Features

- 7 pre-determined animal settings plus 4 user-defined animal settings
- 3-part differentiation of WBC, 20 parameters+3 histograms
- High throughput, 60 samples per hour
- 10.4" TFT colorful LCD with touch screen
- External AC adapter avoids electronic nosies, enhancing accuracy
- Up to 50000 sample results (including histograms) can be stored
- User-friendly software, Multi-language available on request
- Original factory's blood control and calibrator
- Low sample & reagent consumption

RT-7600 for Vet

Auto Hematology Analyzer



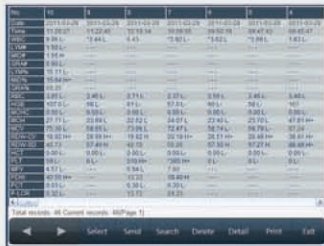
Animal Selection



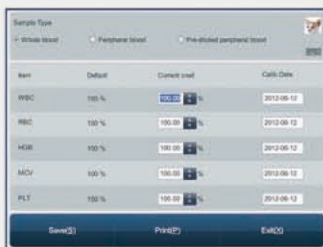
Sample Test



Sample Profile



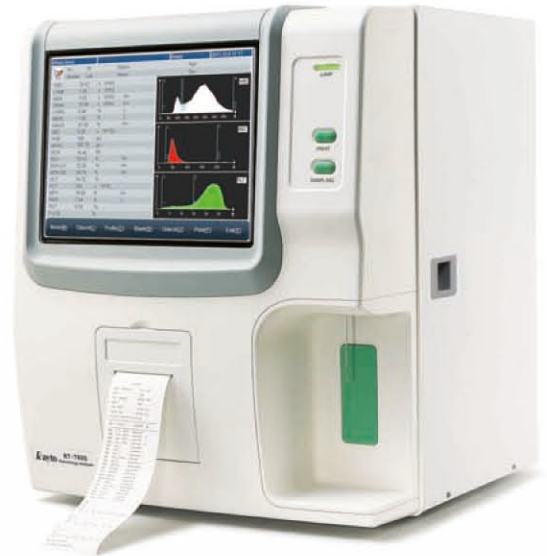
History Record List



Manual Calibration



Normal Value Setting



Technical Specifications

Animal Type:	Cat, Dog, Rabbit, Pig, Goat, Horse, Monkey plus 4 user-defined animal settings.
Parameters:	WBC, LYM#, MID#, GRA#, LYM%, MID%, GRA%, RBC, HGB, MCHC, MCH, MCV, RDW-CV, RDW-SD, HCT, PLT, MPV, PDW, PCT, P-LCR and Histograms for WBC, RBC and PLT
Principle:	Electrical resistance for counting WBC, RBC and PLT
Sample Volume:	Prediluted: 20µL; Whole Blood: 9.8µL
Throughput:	60 samples per hour
Display:	10.4" TFT color LCD with touch screen
Alarms:	Error messages
Input/Output:	RS-232, USB, LAN, keyboard and mouse Interface
Printout:	Thermal printer, 55mm width paper, various printout formats, external printer optional
Operating Environment:	Temperature: 15℃~35℃; Humidity: ≤80%
Power Requirement:	AC 110V-220V, 50/60Hz
Dimension L×W×H (mm):	436×363×367
Weight:	18Kg

Rayto Life and Analytical Sciences Co., Ltd.

2nd Floor, 5th Building, Software Park, NO.2, Gaoxinzhong
3rd Road, High-tech Industrial Park, Nanshan,
Shenzhen 518057, P.R. China

Tel: +86(755)86168896 Fax: +86(755)86168796
Email: info@rayto.com Http://www.rayto.com



Rayto reserves the right to change specifications without prior notice.
P/N: ENG-RT7600V-20120711